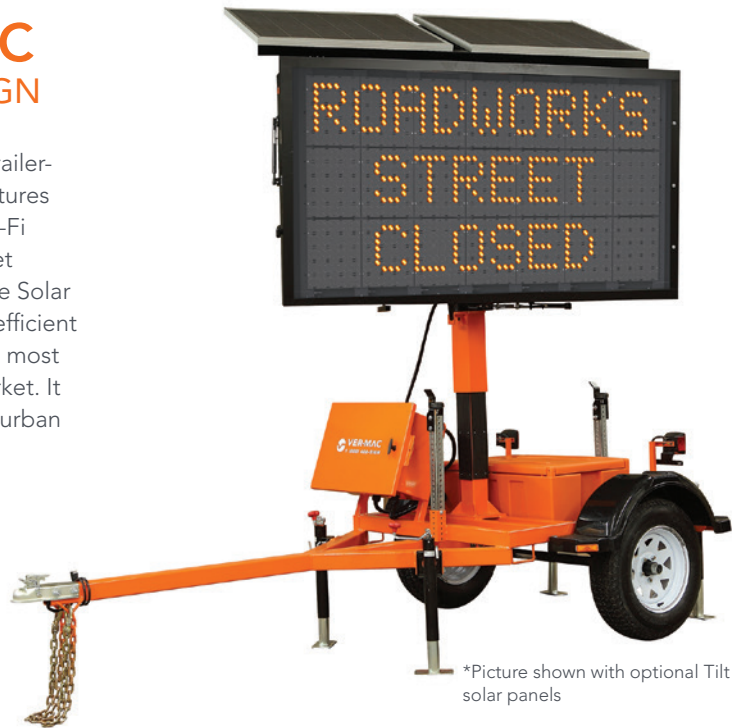


CONSTRUCTION SIGNS LTD.

Newfoundland & Labrador's
leaders in construction signage.

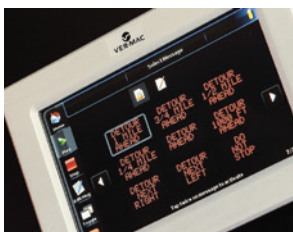
PCMS-548 HYDRAULIC TRAILER-MOUNTED MESSAGE SIGN

Ver-Mac's PCMS-548 hydraulic is a mini full-matrix trailer-mounted portable changeable message sign. It features the NTCIP-compliant V-Touch Controller, V-Sync Wi-Fi Communication, Stealth Technology, JamLogic Fleet Management Software, and optional Tilt-and-Rotate Solar Panels. The PCMS-548 hydraulic combines energy-efficient design and high-quality construction to provide the most reliable and cost-effective message sign on the market. It is the perfect model for lower speed roadways and urban areas.



*Picture shown with optional Tilt & Rotate solar panels

V-TOUCH CONTROLLER



4 WAYS TO CHANGE A MESSAGE



AT THE SIGN

Using our V-Touch Controller



NEAR THE SIGN

Using our V-SYNC Wi-Fi



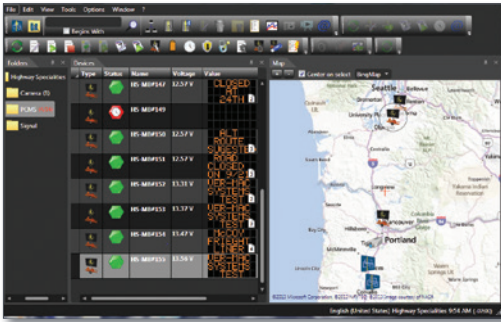
REMOTELY

Using JamLogic on your PC or Laptop



REMOTELY

Using JamLogic Web on your Smartphone or Tablet



JAMLOGIC® FLEET MANAGEMENT SOFTWARE

The PCMS-548 hydraulic is equipped with Ver-Mac's high-speed modem with GPS which maximizes your productivity, efficiency and profitability all remotely from your office or home! The JamLogic software is FREE and you get all the updates at no charge!

- Monitor, maintain and manage your signs from any PC, laptop, tablet or smartphone
- View your equipment in a list and GPS map view
- Change a message on one or more signs simultaneously with a simple click
- View your messages and battery voltages
- Group your signs in folders (by customer, location, project... you choose!)
- Receive e-mail or text alerts – optional (low battery cellular failure, etc.)

APPLICATIONS

- City and county (urban areas)
- School zones
- Special events

POWER SUPPLY CONFIGURATION

SOLAR PANELS

Provide maximum solar recharging during all four seasons.

- Designed to run 12 months in most regions without manual charging
- Various configurations of solar panels and batteries are available to meet your needs.

HIGH-QUALITY CONSTRUCTION

POWDER COATING SUPERIOR FINISH

Impact, humidity, salt spray and rust resistant

4 LEVELING JACKS

For stabilization and easy transportation

ELECTRO-HYDRAULIC LIFT MECHANISM

For a quick and effortless deployment

HEAVY-DUTY PLASTIC FENDERS

For durability and easy replacement

PLASTIC BATTERY BOX

To minimize battery corrosion

LOCKABLE CONTROL BOX

For security

2-IN. (51 MM) COUPLER OR 3-IN. (76 MM) PINTLE EYE

For easy towing

STEALTH TECHNOLOGY

Ver-Mac's innovative Stealth Technology design will help you significantly reduce your battery maintenance and repair costs. This technology combines two great innovations:



**CLEVERLY HIDDEN
BATTERY COMPARTMENT**
Deter thieves from stealing
batteries



**LONG-LASTING SEALED
BATTERIES**
No maintenance required

DISPLAY

- Display panel: 45 x 80 in. (1146 x 2027 mm)
- Full matrix of 30 x 56 pixels
- 2 LEDs per pixel
- 5 x 7 pixels (8.75 in.) characters (default)
- 3 lines of 9 characters per line (default 5x7 font)
- Up to 3 lines of 12 characters per line (3 x 7 font)
- Display sign rotates 360 degrees for perfect setting
- Plug-and-play display modules for simplified maintenance

DIMENSIONS AND WEIGHTS

- Overall length: 131 in. (3338 mm)
- Overall width: 71 in. (1791 mm)
- Traveling height: 94 in. (2393 mm)
- Operating height: 164 in. (4162 mm)
- Weight (approx.): 570 kg (1255 lb.)
- Axle/suspension: 909 kg (2000 lb.)

WARRANTY

- 1 year on complete trailer
- 2 years on electronic components manufactured by Ver-Mac

OPTIONS

- Battery charger
- Tongue wheel jack
- Radar
- Data logger (requires radar)
- Tilt-and-Rotate Solar Panels
- Fixed Camera
- PTZ Camera

Other options are available to meet your needs.

